

GOLD COAST CAPITAL RESOURCES

2 BLEECKER STREET 2nd FLOOR

FULL FLOOR LUXURY LOFT AT 316 BOWERY

Asking Price: \$3,380,000



2 Bedroom 2 Bathroom, Private Keyed elevator and washer/dryer! This amazing loft at Bowery and Bleecker combines Landmark Status and Modern Luxury.

Originally constructed in 1866 and now meticulously crafted and enhanced, this full floor loft has twelve Spectacular 14' floor to ceiling windows on both the North and East sides, with the finest modern interiors.

Features: 14' ceilings, fabulous Poliform kitchens accented with Corian counter tops featuring Miele appliances, Sub Zero and Bosch technology.

Each unit comes with a pre-wired sound system and 50" plasma TV, California Closets, PRIVATE key lock elevator and video security.

You'll enjoy amazing light & views, an inviting and totally livable layout, all in the epicenter of Downtown's most exciting neighborhood.



Alexander Leder

Licensed Real Estate Agent

AL@goldcoastcapitalresources.com | 516.902.0950

Gold Coast Capital Resources, LLC | 319 Lafayette St, Suite 176, NY, NY 10012 | Fax: 208.441.9380

www.goldcoastcapitalresources.com

All material herein is intended for information purposes only and has been compiled from sources deemed reliable. Though information is believed to be correct, it is presented subject to errors, omissions, changes, or withdrawal without notice.

LOCATED ON THE SOUTHWEST CORNER OF
BOWERY AND BLEECKER

Sale Price: \$3,380,000
2 Bdrm, 2 Bath
Approx. 1862 s.f.
Floor to Ceiling Windows
14-foot Ceilings

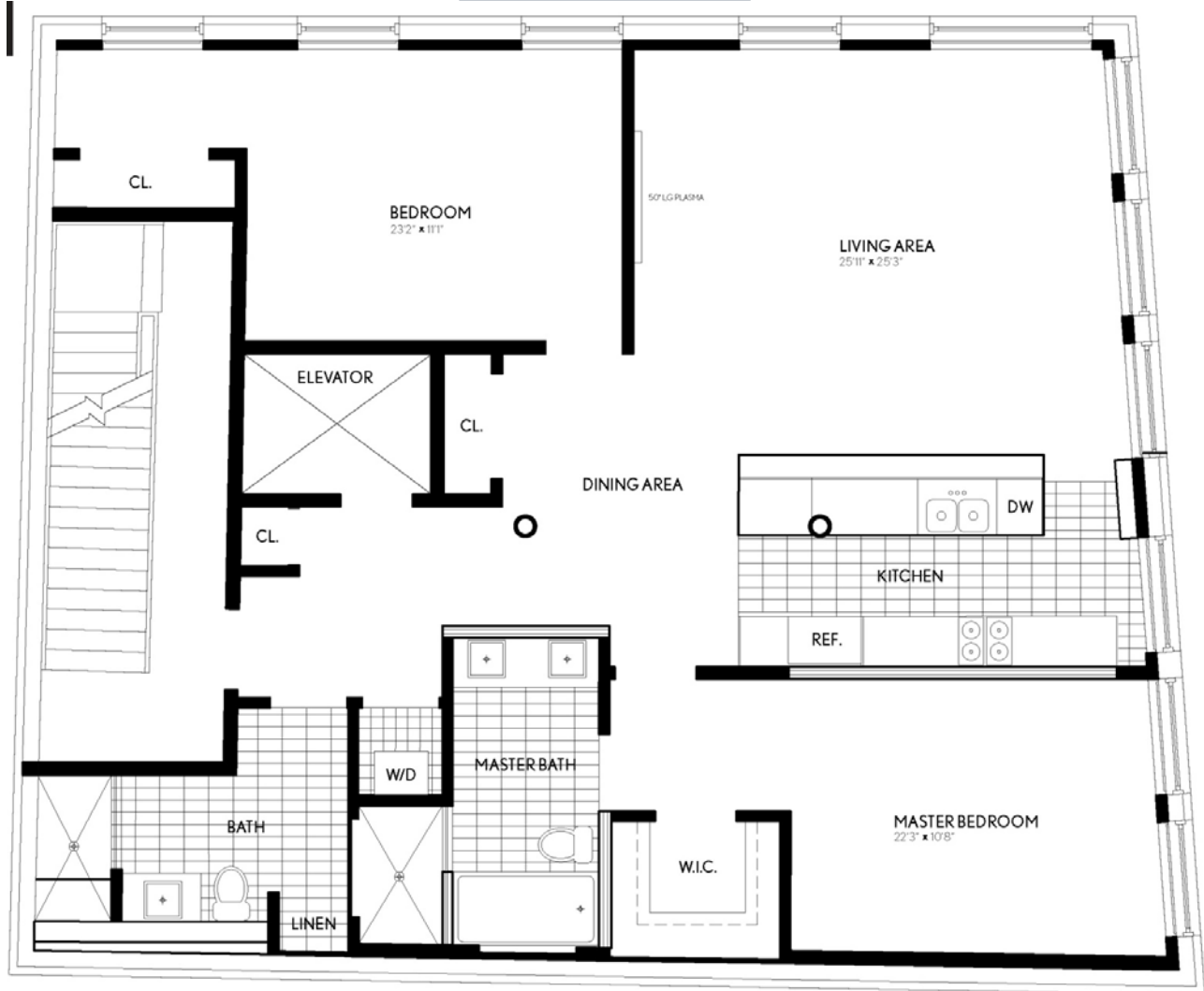
Appliances by:
Subzero
Miele
Bosch Washer-Dryer
Poliform Kitchen



Monthly CC's: \$1,521
Net Monthly RE Taxes: \$1,388*

*Under the guidelines of the cooperative and condominium tax abatement program the buyer may be entitled to 17.5% tax abatement.

Pet Friendly
Video Security
Keyed Elevator
50" Plasma TV
California Closets



CONTACT

ALEXANDER LEDER

GOLD COAST CAPITAL RESOURCES

516+902+0950

WWW.GOLDCOASTCAPITALRESOURCES.COM

All material herein is intended for information purposes only and has been compiled from sources deemed reliable. Though information is believed to be correct, it is presented subject to errors, omissions, changes, or withdrawal without notice.