

2 BLEECKER STREET PENTHOUSE

Sale Price: \$2,300,000

2 Bdrm, 2 Bath

Approx. 1862 s.f.

Approx. 500 s.f. Private Roof Deck

14-foot Ceilings

Appliances by:

Subzero & Miele

Bosch Washer-Dryer

Poliform



Monthly CC's: \$1,917*

Net Monthly RE Taxes: \$1,105**

after abatements see below

Pet Friendly
Video Security
Keyed Elevator
California Closets
50" Plasma TV

LOCATED ON THE SOUTHWEST CORNER OF

BOWERY AND BLEECKER



LOFTS

2 Bedroom 2 Bathroom Duplex Penthouse with a 500 square foot PRIVATE ROOFDECK (amazing views), Private Keyed elevator and washer/dryer! This amazing loft at Bowery and Bleecker combines Landmark Status and Modern Luxury. Originally constructed in 1866 and now meticulously crafted and enhanced, this full floor PENTHOUSE loft has excellent light with the finest modern interiors.

Features: 14' ceilings, fabulous Poliform kitchens accented with Corian counter tops featuring Miele appliances, Sub Zero and Bosch technology. Each unit comes with a pre-wired sound system and 50" plasma TV, California Closets, PRIVATE key lock elevator and video security. You'll enjoy amazing light & views, an inviting and totally livable layout, all in the epicenter of Downtown's most exciting neighborhood.

Alexander Leder

Licensed Real Estate Agent

Gold Coast Capital Resources, LLC

319 Lafayette St, Suite 176

New York, NY 10012

O (516) 902-0950

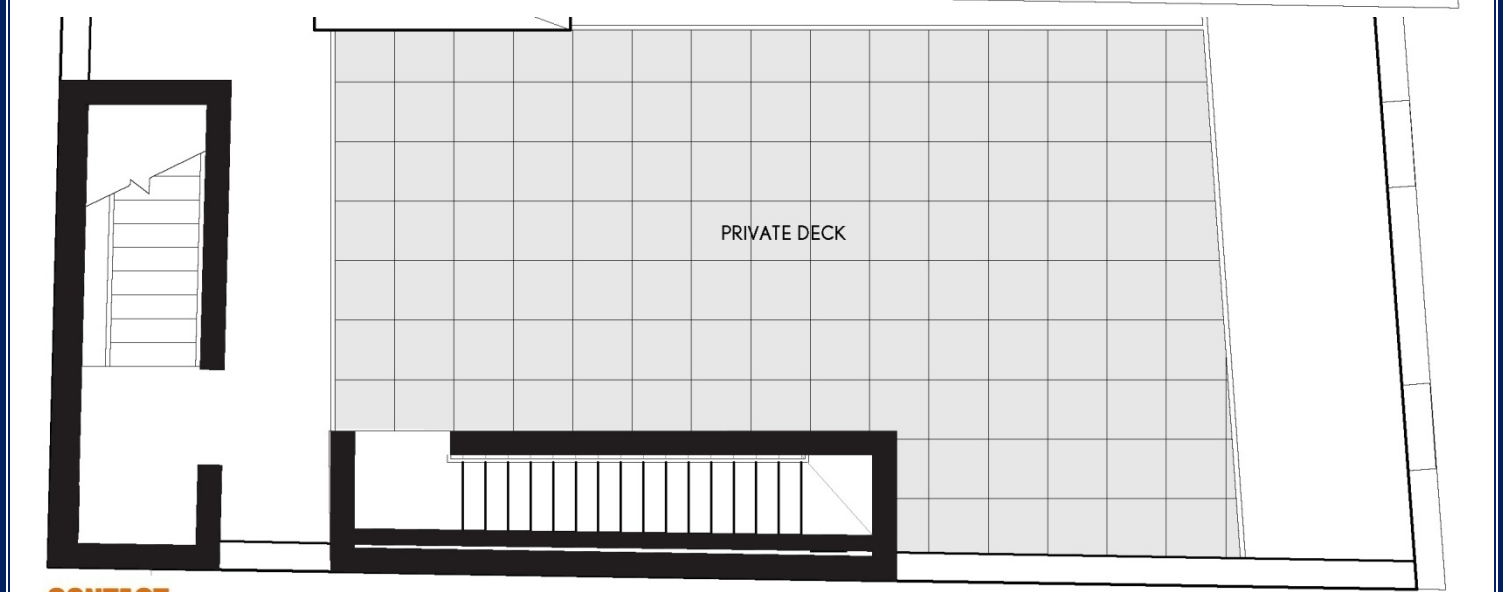
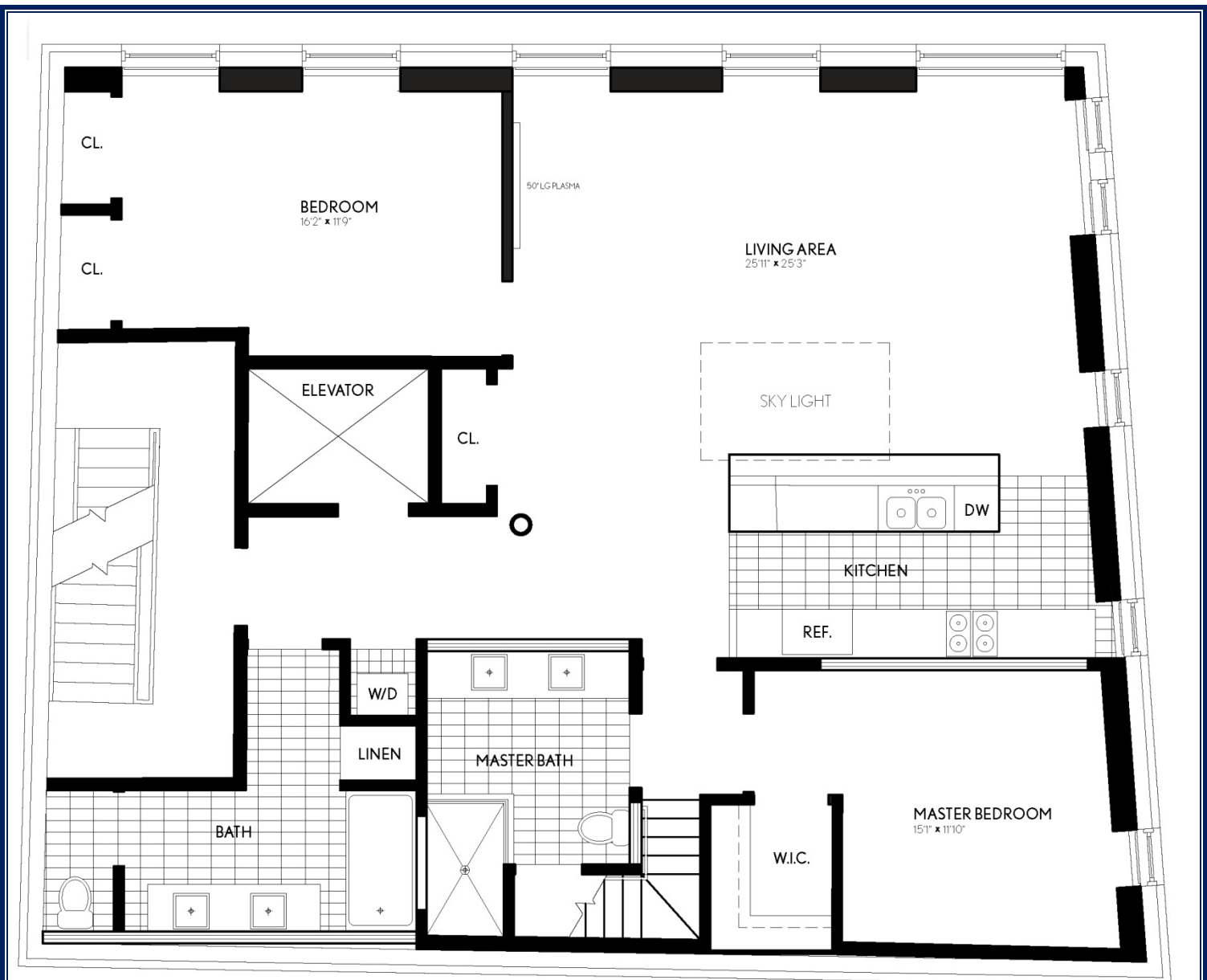
F (208) 441-9380

AL@goldcoastcapitalresources.com

www.goldcoastcapitalresources.com

*Under the guidelines of the Cooperative and Condominium tax abatement program the buyer may be entitled to 17.5% tax abatement.

**Additionally the Sponsor is offering a private tax abatement incentive of \$6000/year for 10 years.



CONTACT
ALEXANDER LEDER
 GOLD COAST CAPITAL RESOURCES
516+902+0950